
OPERATOR'S MANUAL

PFAST



WARNING!
Before operating this product,
read and understand this
Operator's Manual.
Become familiar with the
potential hazards of this unit.
Contact SUMNER
if you have any questions.

SUMNER

www.sumner.com

Index

| | |
|--|-----|
| Introduction..... | 3 |
| Gantry Components | 3 |
| Operator Safety Instructions..... | 3 |
| GH3/4T Gantry Lift Assembly | 3-6 |
| 1. Erect A-Frame | 4 |
| 2. Assemble Components | 5-6 |
| Gantry Height Adjustment..... | 6-7 |
| 1. Unlock casters | 6 |
| 2. Adjust lifting handle location..... | 6 |
| 3. Remove locking pins..... | 6-7 |
| Gantry Span Adjustment..... | 7 |
| Moving Gantry Lift | 7 |
| GH3/4T Gantry Specifications | 8 |

OWNER'S RESPONSIBILITIES

Throughout this publication, the words **WARNING**, **CAUTION** and **IMPORTANT** will be used to alert the user to special instructions concerning a particular operation that may be hazardous if performed incorrectly or carelessly.

OBSERVE THEM CAREFULLY !!



WARNING

Hazards or unsafe practices which could result in severe personal injury or death.



CAUTION

Hazards or unsafe practices which could result in minor personal injury, product or property damage.



IMPORTANT

Indicates information or instructions that are necessary for proper operation and/or maintenance.

Introduction

Thank you for choosing Sumner's PFAST to meet your pipe fitting needs. The PFAST has a load capacity of 600 lbs (270 kg). Following proper procedures for use and maintenance of Sumner's PFAST described in this manual will provide you with years of dependable service.

PFAST Components

Sumner's PFAST consists of the below components. Before operating be certain that all components are available.

- Vee Table (PN 785565)
- Bed Table (PN 785580)
- Side Table (PN 785560)
- Chuck Table (PN 785585)
- Chuck Adapter Plate (PN 785550)
- Wedge Support (PN 785578)
- Chuck Nuts (PN 785455)

Operator Safety Instructions



IMPORTANT

Read and understand this manual prior to operating or performing maintenance on this tool.

1. **ALWAYS** Inspect all equipment prior to use to make certain it is in proper working order.
2. **NEVER** use unit if any part of equipment appears damaged or does not assemble properly.
3. **ALWAYS** use only Sumner replacement parts. Any replacement parts not supplied by Sumner Manufacturing will severely compromise the quality and safety designed into this unit as well as invalidate the warranty.
4. As a precaution, **ALWAYS** wear proper clothing when operating unit, including hard hat, work gloves and safety shoes.
5. **ALWAYS** avoid horseplay around equipment, and keep bystanders at a safe distance. Do not allow children to operate this unit and always keep them out of work areas.
6. **NEVER** misuse the unit. Perform only the functions for which the unit is designed. Never attempt to operate the equipment at more than the recommended capacity.

7. No riders on unit. This unit was designed for pipe fitting purposes **ONLY** and is not designed to function as a personnel lift or carrier.
8. **NEVER** exceed rated load capacity.
9. It is not recommended to move the PFAST with a load.
10. **NEVER** leave a load on the PFAST unattended.
11. **ALWAYS** use PFAST on a hard, level, smooth surface that is free of debris and obstructions. Be certain the surface the Gantry is on can support the full weight of the intended load.
12. **NEVER** move a fully assembled PFAST using a fork lift or other lifting device.
13. **ALWAYS** ensure load is not secured to the ground before attempting to lift it.

PFAST Assembly

The following tools are required to properly assemble the PFAST:

- 1/4" allen wrench
- 1/8" allen wrench
- 3/16" allen wrench
- 3/8" allen wrench
- 3/4" socket wrench
- 3/8" socket wrench
- 3/4" wrench
- 3/8" wrench
- 7/16" wrench

Step 1

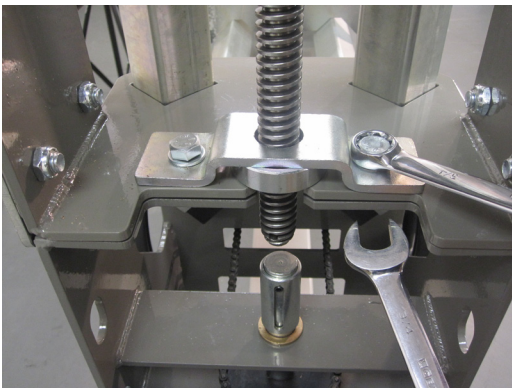
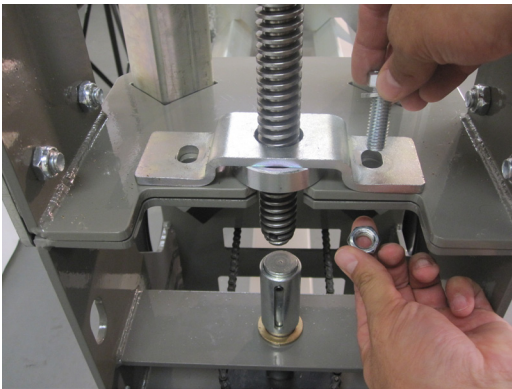


Remove packing material from unit and set up on a clean, flat surface.

Step 2

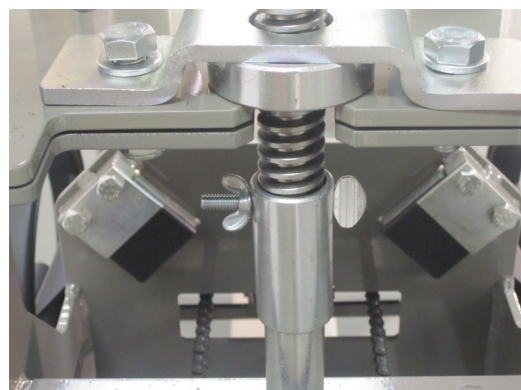
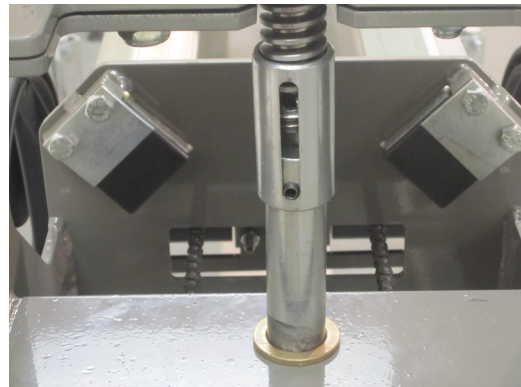
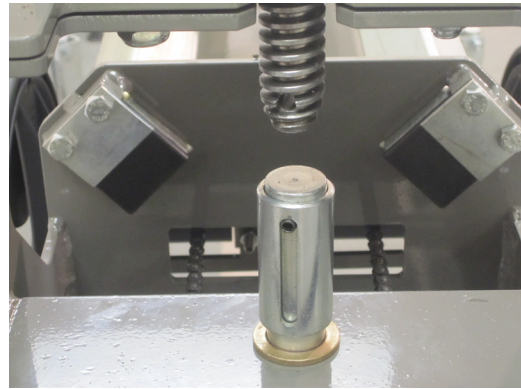
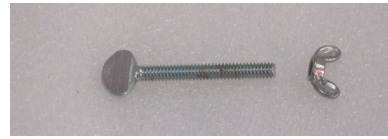


Erect main mast using 2 screws (SCREW, HHC 1/2-13 x 1-1/2), washers (WASHER, FLAT 1/2 SAE) and nuts (NUT, INSERT LOCK 1/2-13) as shown below:



Step 3

Slide coupling upward and secure using screw (SCREW HHC 1/4-20 x 1-3/4) and nut (NUT, ACORN 1/4-20) as shown below:

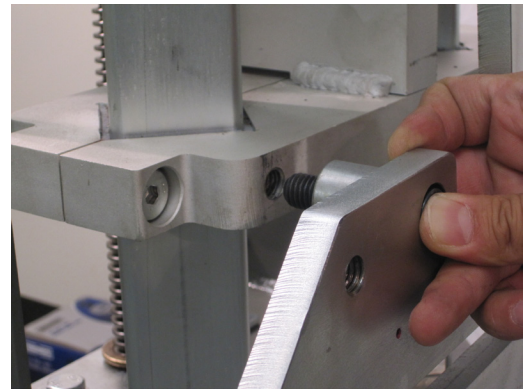


Step 4

Level unit by turning handles on each leg to lower or heighten each leg as necessary.:

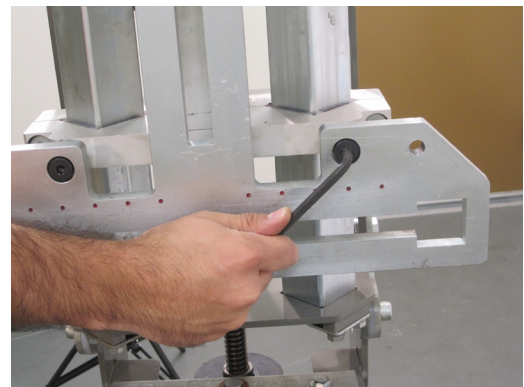
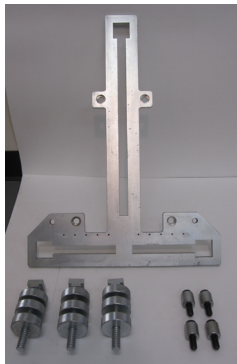


Secure chuck with screws and lockwashers.



Step 5

Attach Chuck Adapter Plate. Rotate handwheel to align upper screw with lower drive shaft.





Step 6

Attach Chuck Mounting Pins by placing through opening on each end and sliding toward the center.

